

Technical DATA SHEET



COATINGS • SEALANTS • MEMBRANES • POLYUREAS • EPOXIES • PRIMERS



ELASTO-DECK™ 5000X2

Waterproof Coating for Critical Areas

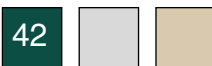
PRODUCT DESCRIPTION:

ELASTO-DECK™ 5000X2 is a liquid-applied, single-component, moisture-cured, polyurethane deck elastomeric deck coating system for walking decks, balconies, patios, roofs, etc., where an absolutely waterproof coating is crucial, such as above living quarters or any other occupied areas. The ELASTO-DECK™ 5000X2 system consists of a ELASTO-DECK™ 5001 base coat, ELASTO-GLAZE™ 6001 AL top coat and a primer where necessary. ELASTO-DECK™ 5000X2 is available in a natural aggregate or a pigmented finish.

BASIC USES:

For waterproofing patios, sun decks, stairways, balconies, roofs, etc. ELASTO-DECK™ 5000X2 can be used on all decks where a waterproof skid-resistant, long-lasting, wear-resistant surface is required. It may be used on new decks as well as on old concrete decks which are damaged, or cracked. The system is suitable for exterior as well as interior applications in all kinds of climates. The coating retains its elastomeric properties in below freezing weather as well as in very hot climates. The complete system including aggregate is approximately 1/8" thick (3.2 mm).

COLORS: Concrete Grey and Tan (base).
The top coat is available in 42 colors.



SIZES:

Available in 1 gallon cans, 5-gallon pails and 55-gallon drums. Weighs 10 lbs. per gallon (4.5 kg/gallon).

LIMITATIONS:

All materials shall be delivered to the jobsite in unopened containers clearly marked and labeled. Containers that have been opened must be used up within one or two days since these materials are moisture-reactive. The coating sets up when exposed to air. All surfaces must be completely free of foreign matter and primed where necessary.

INSTALLATION

SURFACE PREPARATION: All surfaces which are to receive ELASTO-DECK™ 5000X2 shall be free of contamination such as water, curing compounds, hardeners, bond-breakers, paint, etc. A light broom-finish is recommended for concrete surfaces. It is desirable to watercure concrete in lieu of curing compounds. Only exterior grade plywood should be used. Contaminants should be removed by sandblasting or acid-etching. If etching is used, properly neutralize the acid and allow adequate time for surface to dry. Except for non-moving shrinkage cracks, all other cracks and joints must be sealed with ELASTO-THANE™ 230, a single-component, moisture-cured polyurethane sealant manufactured by PACIFIC POLYMERS INTERNATIONAL, INC. All surfaces, where necessary, must be primed with DECK-THANE™ PRIMER prior to application of the coating system at a rate of 355 square feet per gallon (8.6 m²/liter). All seams between plywood sheets and those between metal flashing and the plywood deck must be reinforced by imbedding a 4-inch (10 cm) wide strip of glass cloth tape in wet ELASTO-DECK™ 5001, which is brushed evenly over the seam in a width of about 5 inches (12.7 cm) and a thickness of about 20 mils wet (.5 mm). The application of ELASTO-DECK™ 5001 can subsequently be made immediately over the entire area, including the taped areas.

STANDARDS: City of San Francisco approval No. 07570 PAC. 197. Complies with A.S.T.M. C-957-05.

MAINTENANCE:

Since, as with all deck coatings, the topcoat is subject to staining by such foreign matter as nitrates, fertilizers, hard water, and other substances, it must be maintained. Please refer to the Maintenance Manual for proper maintenance procedures. The manufacturer is not liable for staining caused by hard water deposits, nitrates, fertilizers and other foreign matter. If ELASTO-DECK™ 5000X2 is damaged, it can be repaired by cleaning the surface with Acetone and recoating it with ELASTO-DECK™ 5000X2 system.

Pacific Polymers International, Inc.

an **TW** company

12271 Monarch St., Garden Grove, CA 92841 USA Phone: 714.898.0025 • Fax: 714.898.5687 • <http://www.pacpoly.com>

© Copyright 2008, Pacific Polymers International, Inc., 3/08

APPLICATION:

ELASTO-DECK 5001 shall be applied to the plywood or primed concrete at a rate of 55 square feet per gallon (1.47 m²/liter) resulting in a dry film thickness of 25 mils (.6 mm).

After a 24-hour cure, another coat of ELASTO-DECK™ 5001 is applied at the same 25 mil (.6 mm) coverage for a total dry thickness of 50 mils (1.27 mm).

ELASTO-DECK™ 5001 NON-GASSING may be substituted for ELASTO-DECK™ 5001 and applied in one coat at the rate of 28 square feet per gallon (0.74 m²/liter). ELASTO-DECK™ 5001 NON-GASSING may be used in a single 50 mil application over sound surfaces without danger of gassing. Application must be made uniformly to avoid thin spots and care must be taken to avoid pinholes and repair them should they occur.

ELASTO-DECK™ 5001 NON-GASSING may be accelerated to cure in just a few hours by adding approximately 1/2 fluid ounce of water per gallon of material.

Following a 24 hour cure, apply ELASTO-GLAZE™ 6001 AL pigmented, at the rate of 120 square feet per gallon (2.8 m²/liter). Broadcast the desired aggregate into the wet coating to refusal. After an overnight cure, sweep or blow off all the loose aggregate and apply another coat of ELASTO-GLAZE™ 6001 AL, pigmented or clear at a coverage of 110 square feet per gallon (2.7 m²/liter).

Coverage will vary depending on the size of aggregate used. Allow 48 hours cure time before permitting any traffic on the finished system.

AVAILABILITY AND COST:

ELASTO-DECK™ 5000X2 is supplied through building material dealers. Prices vary with quantity and packaging. Quotations are made on request. These products are designed and manufactured to be installed by professional installers familiar with surface preparation and application procedures. All others should consult a professional installer; those who choose to install these products without professional assistance do so at their own risk.

WARNINGS AND HAZARDS:

Before using the products, always refer to MSDS for important warnings and safety information. Use only in areas with adequate ventilation. Avoid breathing vapors. Keep away from heat and flame. Avoid contact with eyes and skin. In the event of skin contact, remove immediately and wash with warm, soapy water. Wear suitable eye protection. Always wash hands before eating.

TECHNICAL SERVICES:

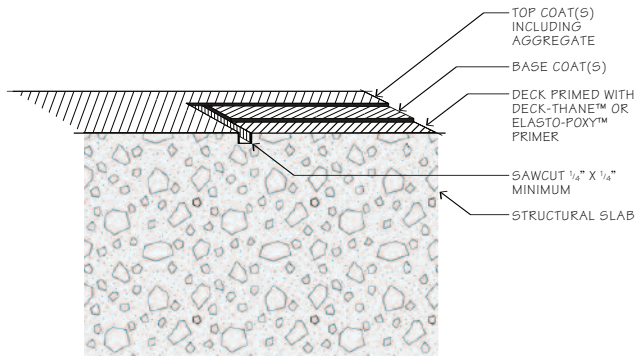
All of the latest updates to product data and specifications are available at the company website. Since product data and specifications change, it is the users responsibility to make certain the most current versions of product data and specifications are being used.

PRODUCT WARRANTY:

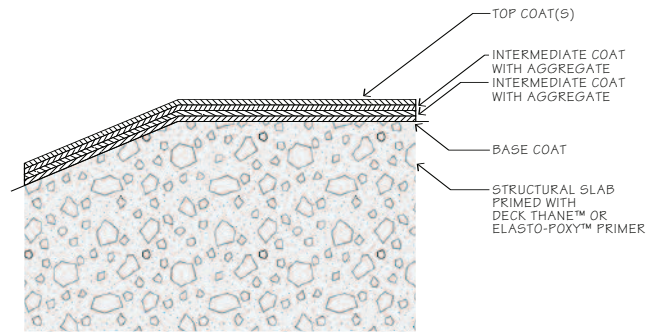
Satisfactory results depend not only upon quality products but also upon factors beyond our control; methods of application and site conditions are examples of such factors and can affect product performance. This warranty consequently extends only to products installed in strict accordance with the manufacturer's specifications. It is the users responsibility to satisfy himself, by his own information and tests, of the suitability of the product for his own intended use; user assumes all risk and liability resulting from his use of the product. The substrate to which the product is applied must be sound structurally and otherwise. Structural or substrate failures or imperfections resulting in damage to or failure of the product are not covered by this warranty. Since the use of the product is beyond the control of the manufacturer, the manufacturer assumes no liability for misapplication and misuse of the product. This warranty does not cover consequential damages, nor does it cover the labor attendant to replacing product in the event of a product failure. The warranty only extends to replacement of the product itself. All products proven to be defective in manufacture will be replaced at no charge. Since the use of these products is beyond our control we cannot assume any risk or liability for results obtained, nor can we accept damage in excess of the purchase price of these products.

PROPERTY	PROCEDURES	Base Coat	Top Coat	
Hardness Shore "A"	A.S.T.M. D-2240	55	92	
Ultimate Tensile Strength	A.S.T.M. D-412	975 psi	2,600 psi	
Ultimate Elongation	A.S.T.M. D-412	825%	190%	
Adhesive Peel Strength on Primed Concrete	A.S.T.M. D-903	90 P.L.I.	210 P.L.I.	
Peel Strength on Plywood	A.S.T.M. D-903	95 P.L.I. cohesive failure	N/A	
Solids Content	A.S.T.M. D-2369	91 ± 2% by weight	80 ± 2% by weight	
		88 ± 2% by volume	78 ± 2% by volume	
Water Absorption	A.S.T.M. D-471	<1% by weight	0.03% by weight	
Temperature Service Range		-50°F to +200°F	-50°F to +200°F	
		-45°C to +93°C	-45°C to +93°C	
Viscosity at 77°F (25°F)	Brookfield Viscometer	70 ± 10 poises	35 ± 5 poises	
Moisture Vapor Transmission	A.S.T.M. E96-66			
		Procedure (a) 15 mil (0.015") dry film (.38mm)	3.7 perms ± 0.6	0.8 perms
		Procedure (b) 30 mil (0.30") dry film (.76mm)	2.4 perms ± 0.4	
		Cured 7 days at 77°F (25°F) 50% RH		
Abrasion Resistance	A.S.T.M. C-501-62T	No change in weight	No change in weight	
		30 mil dry film on 4" x 4" (10cm x 10cm) metal, CS-17 wheel, 1000 rev. with 1000 grams weight		
Tear Resistance (pounds per linear inch)	A.S.T.M. D-1004-66	220	188	
Perpendicular Bond-strength on Plywood		185 psi plywood failure	N/A	
Weight per Gallon		9.7 ± 0.2 lbs	9.9 ± 0.2 lbs	
Shelf Life		6 months	6 months	

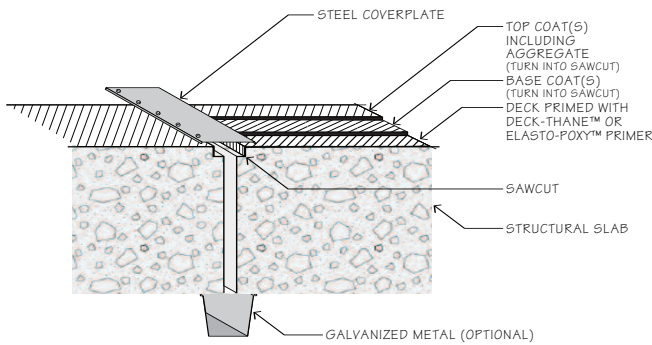
(when stored indoors in cool and dry location at 77°F (25°C) in unopened containers)



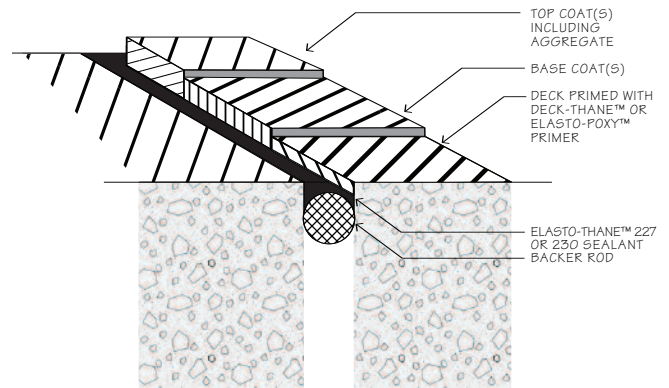
HIGH TRAFFIC TOPPING TERMINATION



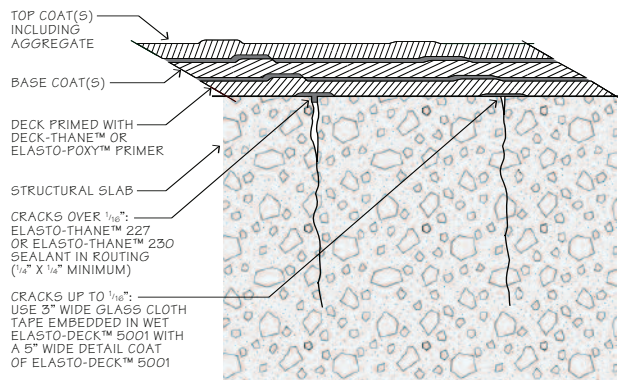
RAMPS AND TURN LANES TRAFFIC TOPPING DETAIL



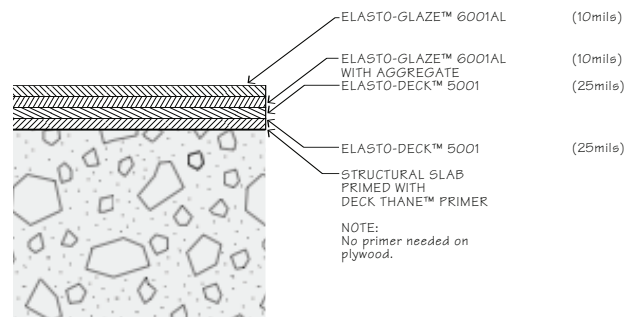
PLATED EXPANSION JOINT TERMINATION DETAIL



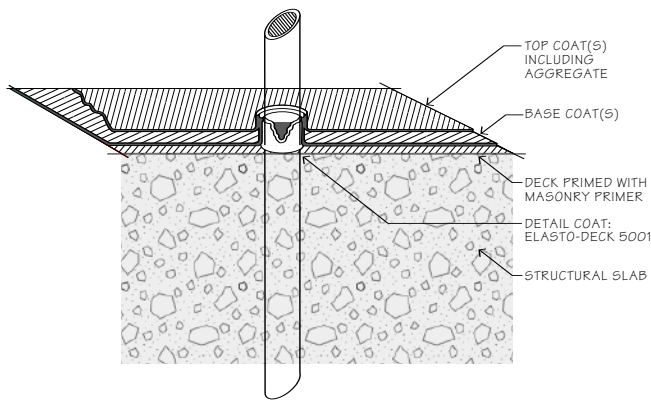
EXPANSION JOINTS FLOOR TO FLOOR DETAIL



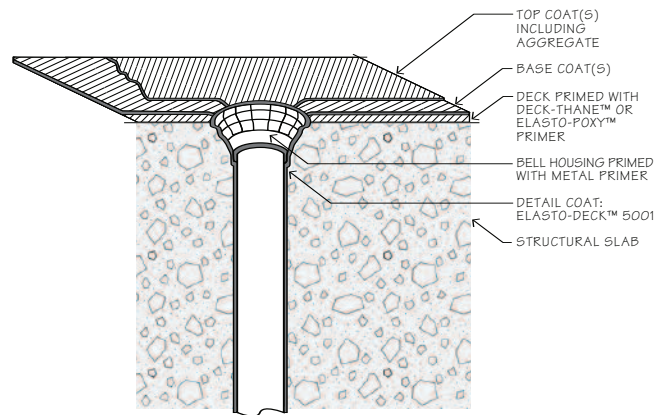
CRACK TREATMENT DETAIL



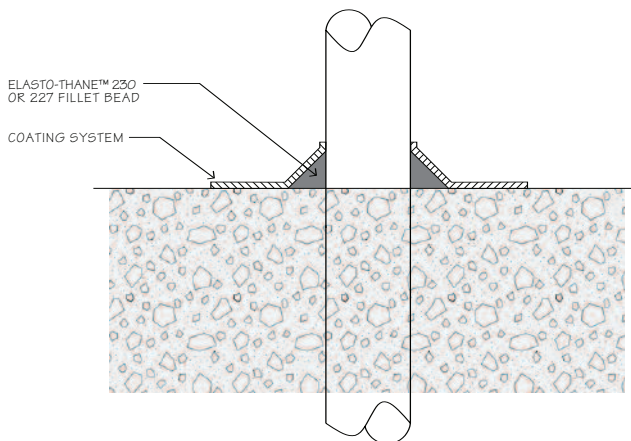
ELASTO-DECK™ 5000X2 SYSTEM (70 DRY MILS)



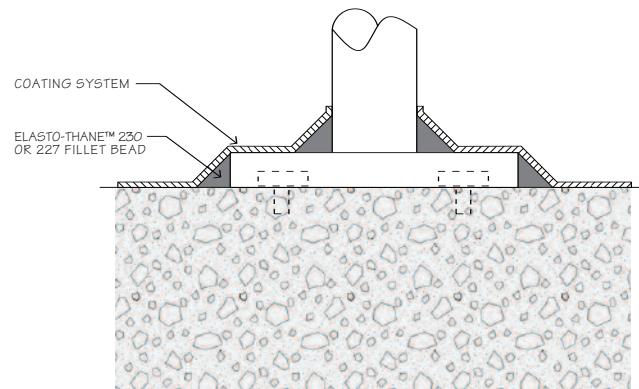
PIPE OR RAILPOST PROJECTION DETAIL



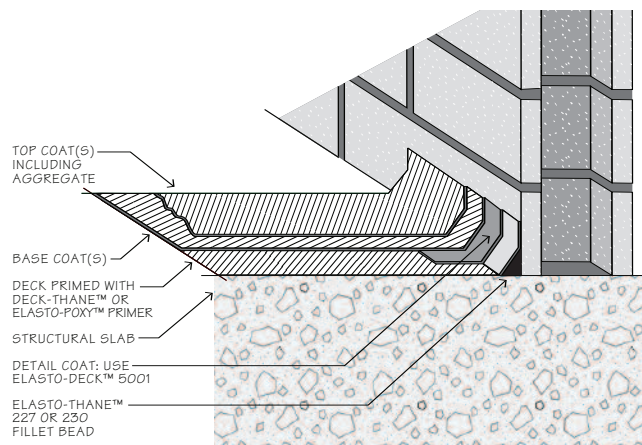
DRAIN DETAIL



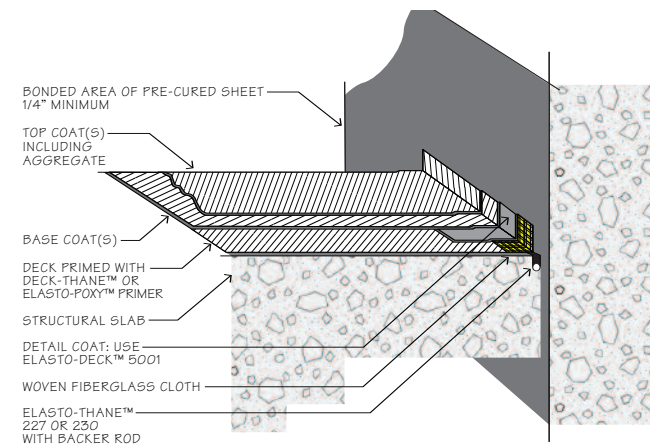
PIPE OR RAILPOST PENETRATION DETAIL



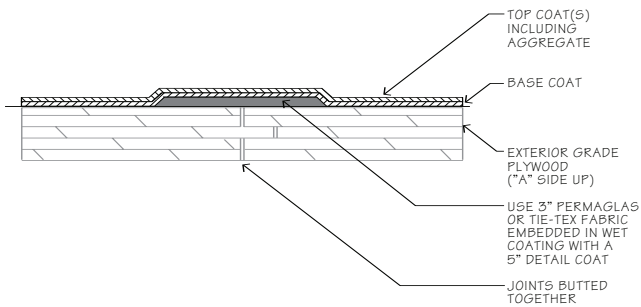
METAL POST PROJECTION DETAIL



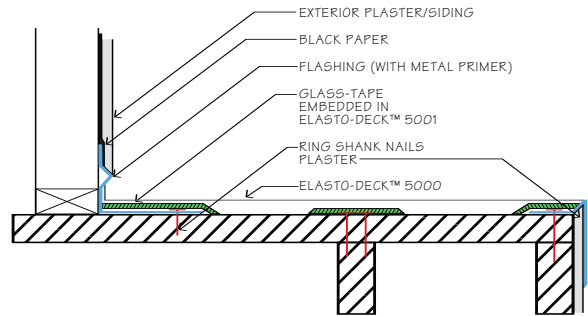
WALL BEARING ON DECK SLAB FLASHING DETAIL



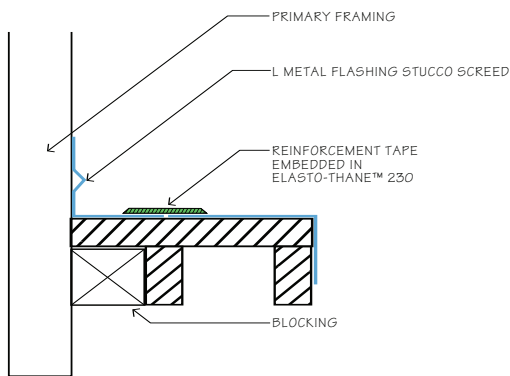
JOINT AT WALL SLAB FLASHING DETAIL



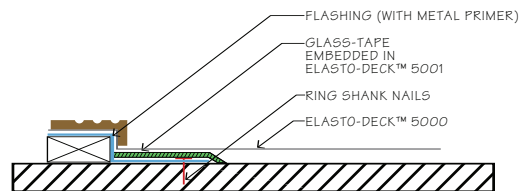
PLYWOOD SEAMS FLOOR TO FLOOR DETAIL



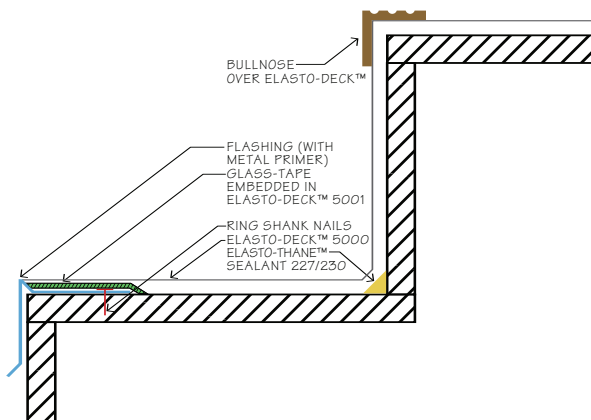
PLYWOOD WALL AND EDGE DETAILS



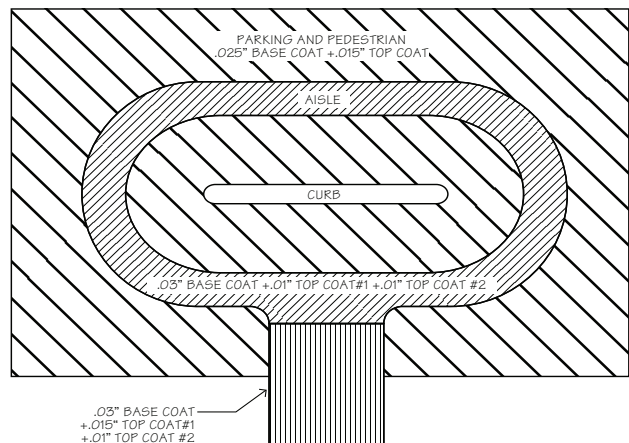
L METAL FLASHING TRANSITION DETAIL



SLIDING DOOR THRESHOLD



PLYWOOD STAIR NOSE DETAILS



TRAFFIC COMPENSATED SERVICE DETAIL